

GREENALU
Making your home a better place

Jakarta :
Jl. Pluit Karang Utara Blok J15 No.10A
Pluit Penjaringan 14450-Jakarta Utara
☎ 021-6610369

Medan :
Jl. Gatot Subroto No. 100 H
Medan Petisah 20118-Sumatera Utara
☎ 061-4146984



www.green-aluminium.com

**THE LEADING ENTERPRISE IN
ALUMINIUM DOORS & WINDOWS**

A SYNERGY OF AESTHETICS AND MODERN RESISTANCE

BRINGING WORLD CLASS COMFORT INTO YOUR HOME

Your home is a reflection of your life's accomplishments and character. GreenAlu offers premium, high-precision aluminum door and window systems that are resilient in all weather conditions. With us realize the limitless aesthetic of a modern home and discover a new standard of luxury.



OUR CLIENTS :



GREENALU
Making your home a better place

OUR PARTNERS :





Bring Beauty and Strength For a Higher Standard of Living

Interior and Exterior Solutions With Customized Design

In response to specific requirements for contemporary trends in architecture and construction, GREENALU offers the manufacture and installation of windows and doors by fulfilling all desired requirements. Whether it's a large size or an amazingly unusual shape, including slanted windows, curved shapes, or triangles, you have the freedom to form a dream facade that is unlike any other construction element.

Large-scale Configuration

GREENALU supports the installation of a large-scale window or partition panes for a bespoke product with excellent results. You can decide how wide you wish the window to be, and we will bring a suitable solution, even for extreme projects.

Resistant Over the Year and Premium Quality

All products are manufactured and assembled under integrated standard compliance. Aluminium billets, extrusion profiles, coating, and fabrication processes are all carried out in an integrated manner using the latest technology. GREENALU uses high-grade materials and other pieces of equipment that have passed the endurance test to get maximum quality.

Impressive Metropolitan Aesthetic Visuals

GREENALU supports all design styles such as contemporary, classic, heritage, or minimalist, with a choice of size, colour, proportion, and finishing. Not only does this increase the value of the building, but we also want everyone inside and outside to have an unforgettable and pleasant experience in the space.



Guarantee The Life Quality With 6 Superior Performances



Optimal Water Tight



Reduce Temperature Transfer



High-level Sound Insulation



Low-Maintenance



Wind Loading Resistance



Long-lasting Coating

CASEMENT WINDOW (CW 40)



Casement Window Performance:

- Water tightness (ASTM E331 and ASTM E547) up to 600 Pa
- Air tightness (ASTM E283)
- Acoustic insulation up to 35 Db

GREENALU Casement Series

Series Green CW 40	Series Green CW 55	Series Green CW 60
Direction Outward Side / Top Hung	Direction Inward Side / Top Hung	Direction Side / Top Hung
Refers To A and C	Refers To D	Refers To

CASEMENT WINDOW (CW 55)



Casement Window Performance:

- Water tightness (ASTM E331 and ASTM E547) up to 600 Pa
- Air tightness (ASTM E283)
- Acoustic insulation up to 35 Db

GREENALU Casement Series

Series Green CW 40	Series Green CW 55	Series Green CW 60
Direction Outward Side / Top Hung	Direction Inward Side / Top Hung	Direction Side / Top Hung
Refers To A and C	Refers To D	Refers To

CASEMENT WINDOW (CW 60)



Casement Window Performance:

- Water tightness (ASTM E331 and ASTM E547) up to 600 Pa
- Air tightness (ASTM E283)
- Acoustic insulation up to 35 Db

GREENALU Casement Series

Series Green CW 40	Series Green CW 55	Series Green CW 60
Direction Outward Side / Top Hung	Direction Inward Side / Top Hung	Direction Outward Side / Top Hung
Refers To A and C	Refers To D	Refers To A, B and C

BASIC CONFIGURATION



A selection of standard configurations designed to deliver performance, flexibility and elegant appearance. Each design seamlessly integrates ventilation, natural lighting and modern architectural aesthetics.

CW 40



CW 55



CW 60



FOLD AND SLIDE DOORS



GREENALU Folding & Sliding Doors

Fold and slide door performance:

- Water tightness (ASTM E331 and ASTM E547) up to 600 Pa
- Air tightness (ASTM E283)
- Accoustic insulation up to 30 Db

BASIC CONFIGURATION

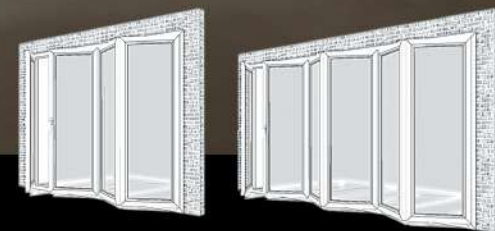


Fold and Slide Door is an aluminum door system that combines folding and sliding mechanisms, where several glass panels in a black aluminum frame can be folded to one side and slid to open up the space to the maximum.

FOLD AND SLIDE DOOR



OPERATION PATH



LIFT AND SLIDE DOORS



GREENALU LIFT AND SLIDE DOORS PERFORMANCE

- Water tightness (ASTM E331 and ASTM E547) up to 600 Pa
- Air tightness (ASTM E283)
- Accoustic insulation up to 30 Db

BASIC CONFIGURATION

Aluminum sliding door with tempered glass and a black aluminum frame, using a sliding system on top and bottom rails, allowing for efficient wide opening without taking up space. The modern, minimalist design is suitable for heavy-duty doors, backyard doors, large rooms, and partitions, etc. and partition, etc.

LIFT AND SLIDE DOOR



OPERATION PATH



EQ SLIDE



EQ SLIDE PERFORMANCE

1. Stronger frame structure, capable of supporting loads of up to 160 kg per door leaf.
2. Greater energy efficiency thanks to a profile design that accommodates IGU glass; suitable for various climates including tropical regions thereby reducing the load on air conditioning systems.
3. Tighter sealing system meeting high airtightness standards.
4. Smoother and more effortless operation due to the use of heavy-duty hardware.

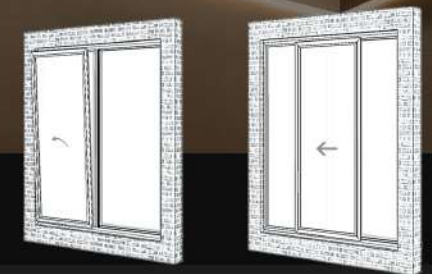
BASIC CONFIGURATION



EQ SLIDE



OPERATION PATH



SLIDING DOOR & WINDOW



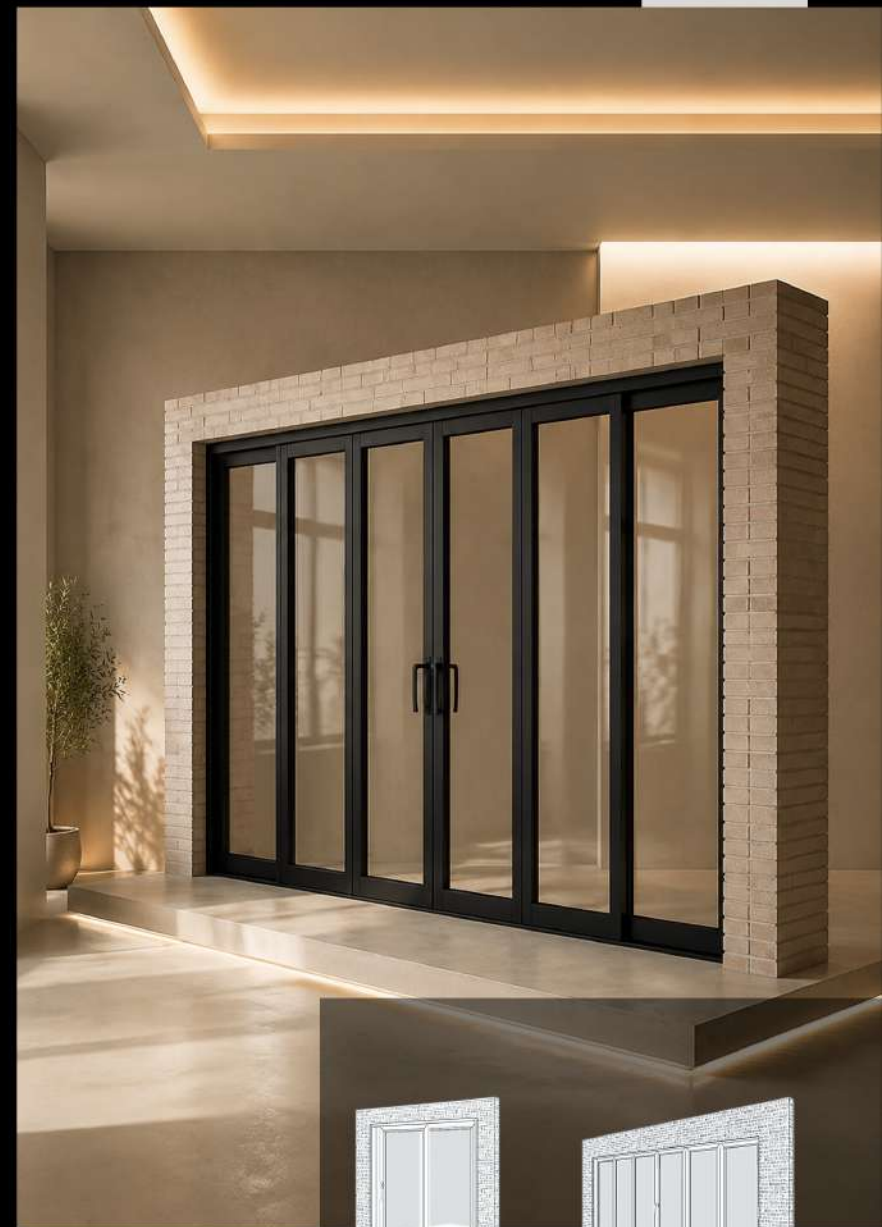
GREENALU SLIDING DOOR & WINDOW PERFORMANCE

- Water tightness (ASTM E331 and ASTM E547)
up to 350 Pa
- Air tightness (ASTM E283)
- Acoustic insulation up to 30 Db

BASIC CONFIGURATION

Our Sliding Window and Sliding Door are the benchmark for effortless and graceful operation with style applicable for any room design. Sliding windows are designed to maximize space. Thanks to their heavy-duty track design, GREENALU sliding doors can create a big panel to suit the design aesthetic.

SLIDING DOOR & WINDOW



OPERATION PATH



INSPRO SERIES



GREENALU INSPRO SERIES PERFORMANCE

MATERIAL

Stainless Steel

WIRE DIAMETER

0.8mm

ALLOY

304

MESH SIZE

1x11 Mesh

COLOR

Black

OPEN AREA

42.71+1%

GREEN SASH HUNG



GREENALU SASH HUNG PERFORMANCE

- Water tightness (ASTM E331 and ASTM E547)
up to 350 Pa
- Air tightness (ASTM E283)
- Acoustic insulation up to 30 Db

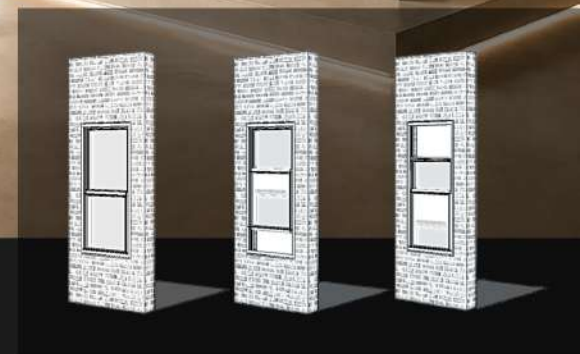
BASIC CONFIGURATION

The Green Sash Hung by Greenalu is an American-style window dating back to the 17th century—that remains relatively unknown in Asia. It features a flexible opening system that allows for operation from either the top or the bottom, ensuring superior air circulation. It is ideal for kitchens, pantries, bathrooms, and dressing rooms.

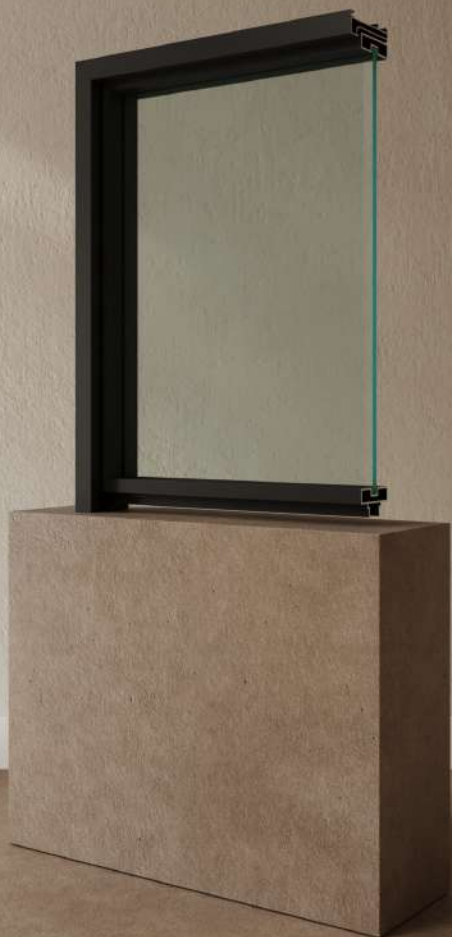
GREEN SASH HUNG



OPERATION PATH



NF55 SLIDING & SWING DOORS



NF55 PERFORMANCE

1. A more open view due to the dominance of glass surfaces
2. Maximized natural light intake, creating a warm atmosphere
3. A minimalist look that enhances both interior and exterior aesthetics

BASIC CONFIGURATION

Creating a more open atmosphere in the living room; allowing light and fresh air into the bedroom and balcony; ensuring a brighter space for selecting clothes in the walk-in closet; and providing natural light for a more comfortable cooking experience in the kitchen.

NF55 SLIDING & SWING DOORS

OPERATION PATH

